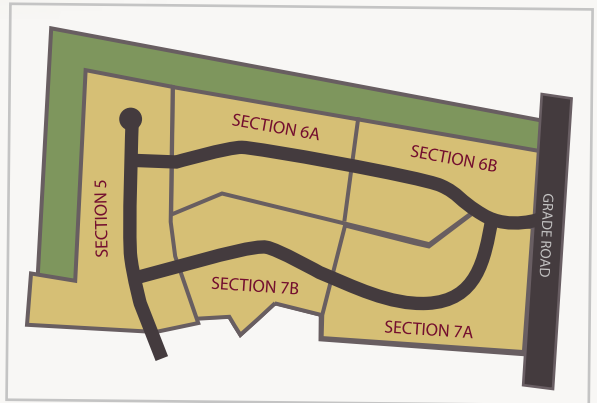
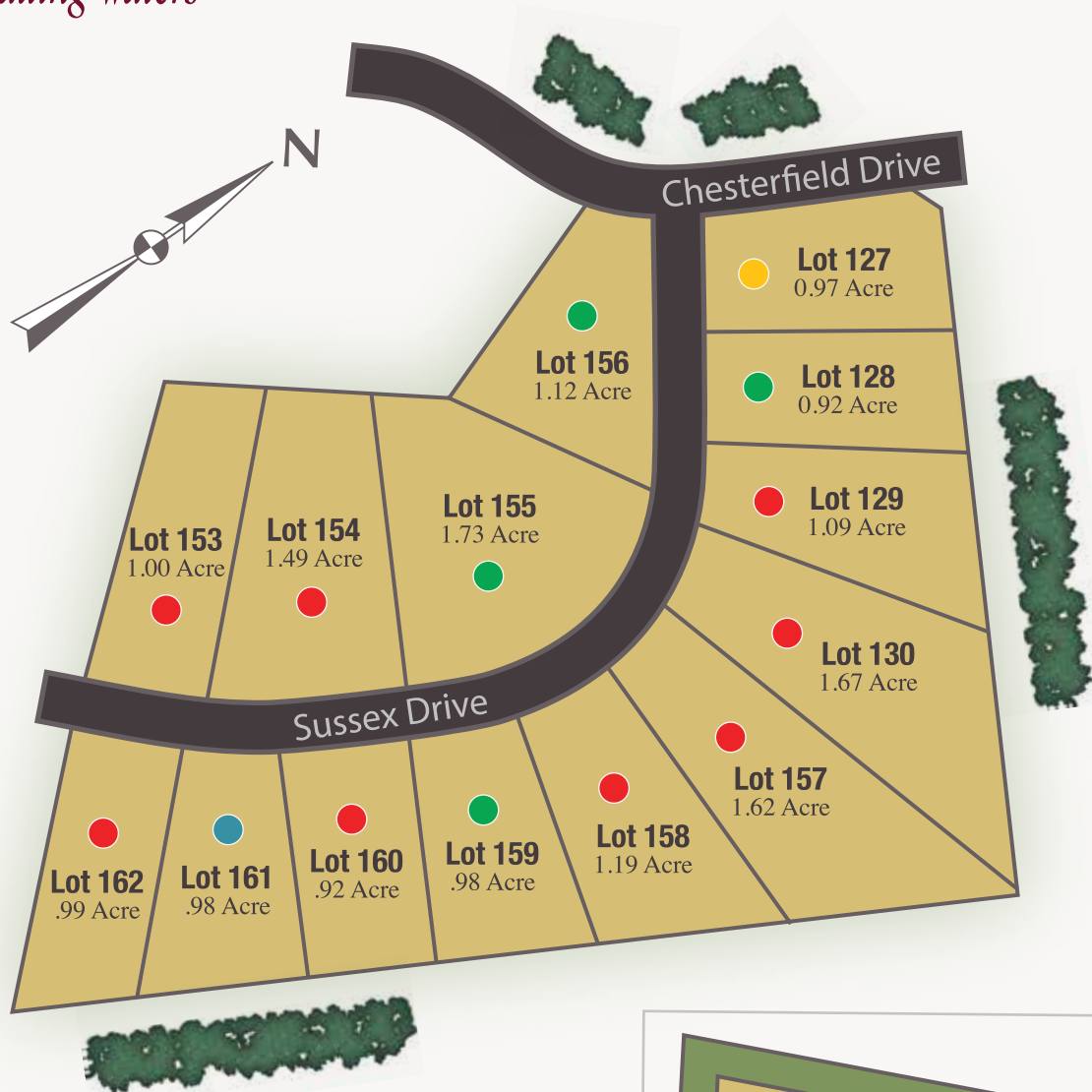


# AMBERFIELD

*at Falling Waters*

## PHASE 7A



TREES SHOWN FOR ILLUSTRATIVE PURPOSES ONLY.

● AVAILABLE  
 ● HOLD  
 ● SOLD  
 ● QUICK DELIVERY

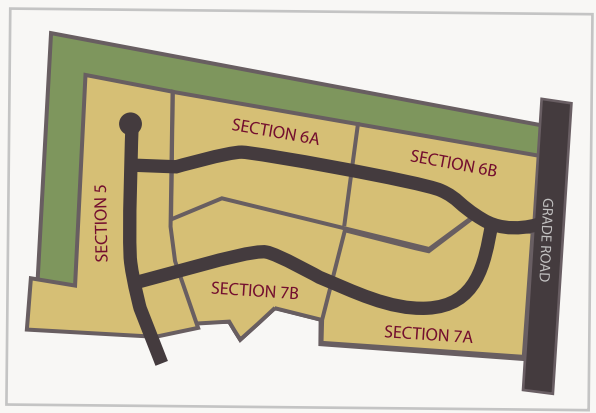
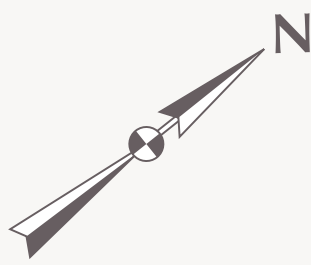
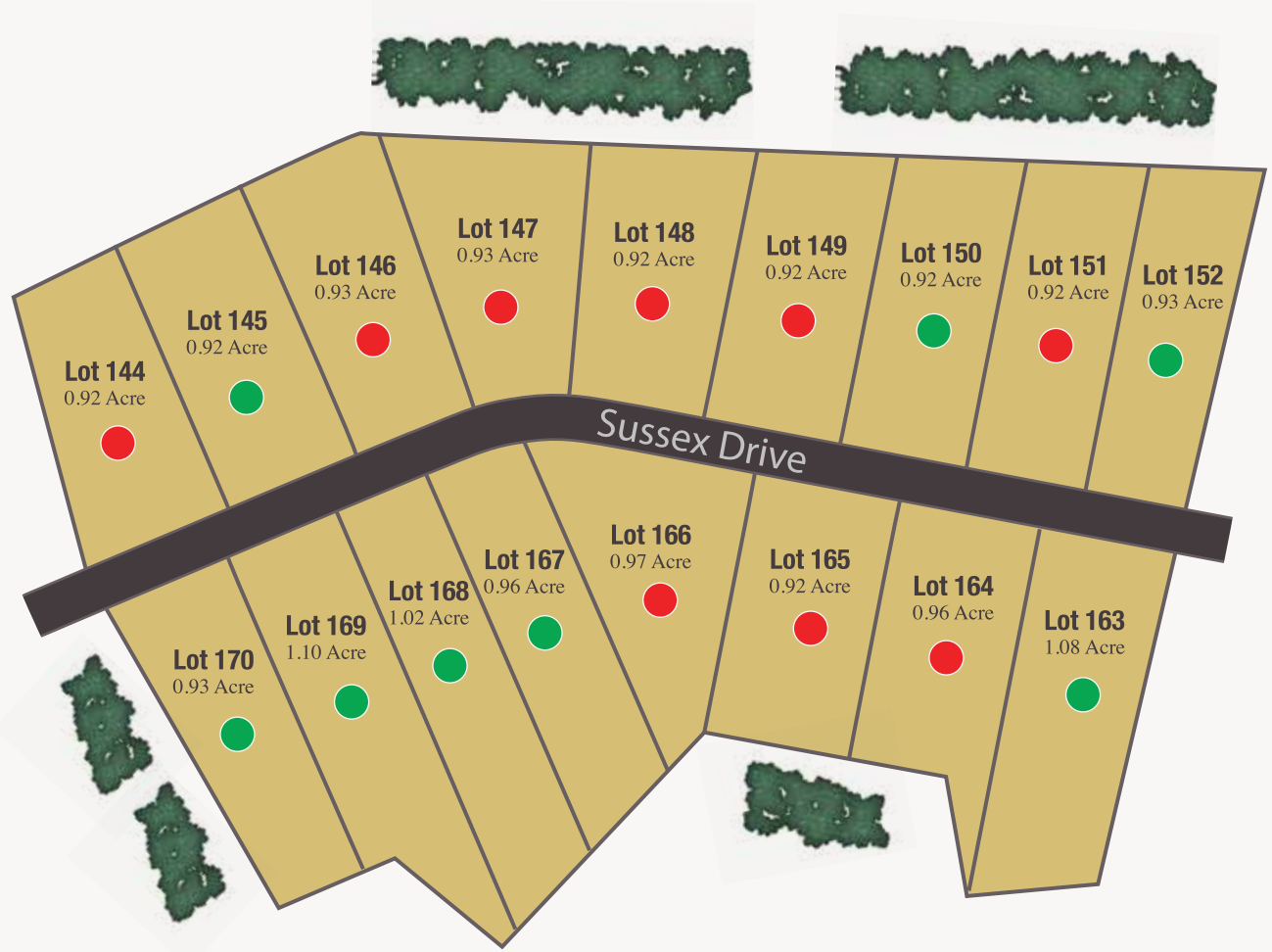
04/2023



# AMBERFIELD

*at Falling Waters*

## PHASE 7B



TREES SHOWN FOR ILLUSTRATIVE PURPOSES ONLY.

- AVAILABLE
- HOLD
- SOLD
- QUICK DELIVERY

04/2023

